



City of Archer

Wastewater Treatment



Project Costs

Table 6.1
Comparison Of Wastewater Treatment Plant Alternatives

Expense	Present Worth of Construction Costs	Present Worth O&M Costs	Present Worth Cost of Treatment	Present Worth Total Cost
Alternative No. 1 – Construct Wastewater Treatment Plant in City of Archer	\$3,603,605	\$1,789,115	N/A	\$5,392,721
Alternative No. 2 – Connect to City of Gainesville Wastewater Treatment System	\$4,514,757	\$2,150,396	\$978,566	\$7,643,720
Alternative No. 3 – Connect to the City of Williston Wastewater Treatment System	\$3,192,311	\$2,783,279	\$1,206,098	\$7,181,688
Alternative No. 4 – Connect to the City of Newberry Wastewater Treatment System	\$2,552,774	\$2,233,769	\$1,580,405	\$6,366,948

Increase of plant capacity to 150,000 gpd would increase the cost of Alt 1 by approximately \$400,000

Project Costs

Table 6.2

Comparison Of Collection System Alternatives

Expense	Present Worth of Construction Costs	Present Worth O&M Costs	Present Worth Total Cost	Cost Per Customer
Alternative No. 1 – Medium Area Gravity Collection System	\$4,158,305	\$921,903	\$5,080,207	\$16,601.98
Alternative No. 2 – Large Area Low Pressure Collection System	\$7,401,687	\$2,202,294	\$9,603,981	\$20,698.24
Alternative No. 3 – Medium Area Low Pressure Collection System	\$4,836,439	\$1,474,831	\$6,311,270	\$20,625.07
Alternative No. 4 – Small Commercial Optimization Low Pressure Collection System	\$1,543,801	\$593,745	\$2,137,546	\$18,916.34
Alternative No. 5 – Medium Area Vacuum Collection System	\$4,896,713	\$2,627,663	\$7,524,376	\$24,589.46

Estimated Rates

Table 7.3d

Proposed Annual Revenues from the City of Archer Wastewater Distribution System

Wastewater Distribution System Operating Revenues

Customer Type	Wastewater Rate Structure		Number of Customers	Average Monthly Wastewater Usage Per Customer	Average Customer Monthly Bill	Monthly Revenue Generated
	Minimum Bill	\$ PER 1,000 gal				
Residential	\$25.00 first 3,000 gallons	\$9.00	245	3,819	\$32.37	\$7,930.90
Churches	\$50.00 first 1,000 gallons	\$25.00	9	2,798	\$94.95	\$854.55
City Accounts	\$55.00 first 2,000 gallons	\$30.00	7	5,202	\$151.06	\$1,057.42
Commercial I	\$60.00 first 1500 gallons	\$50.00	34	4,482	\$209.10	\$7,109.40
Commercial II	\$60.00 first 10,000 gallons	\$50.00	11	16,164	\$368.20	\$4,050.20
Total Monthly Wastewater Operating Revenue =						\$21,002.47
TOTAL ANNUAL REVENUES (100% CONNECTIVITY):						\$252,029.58

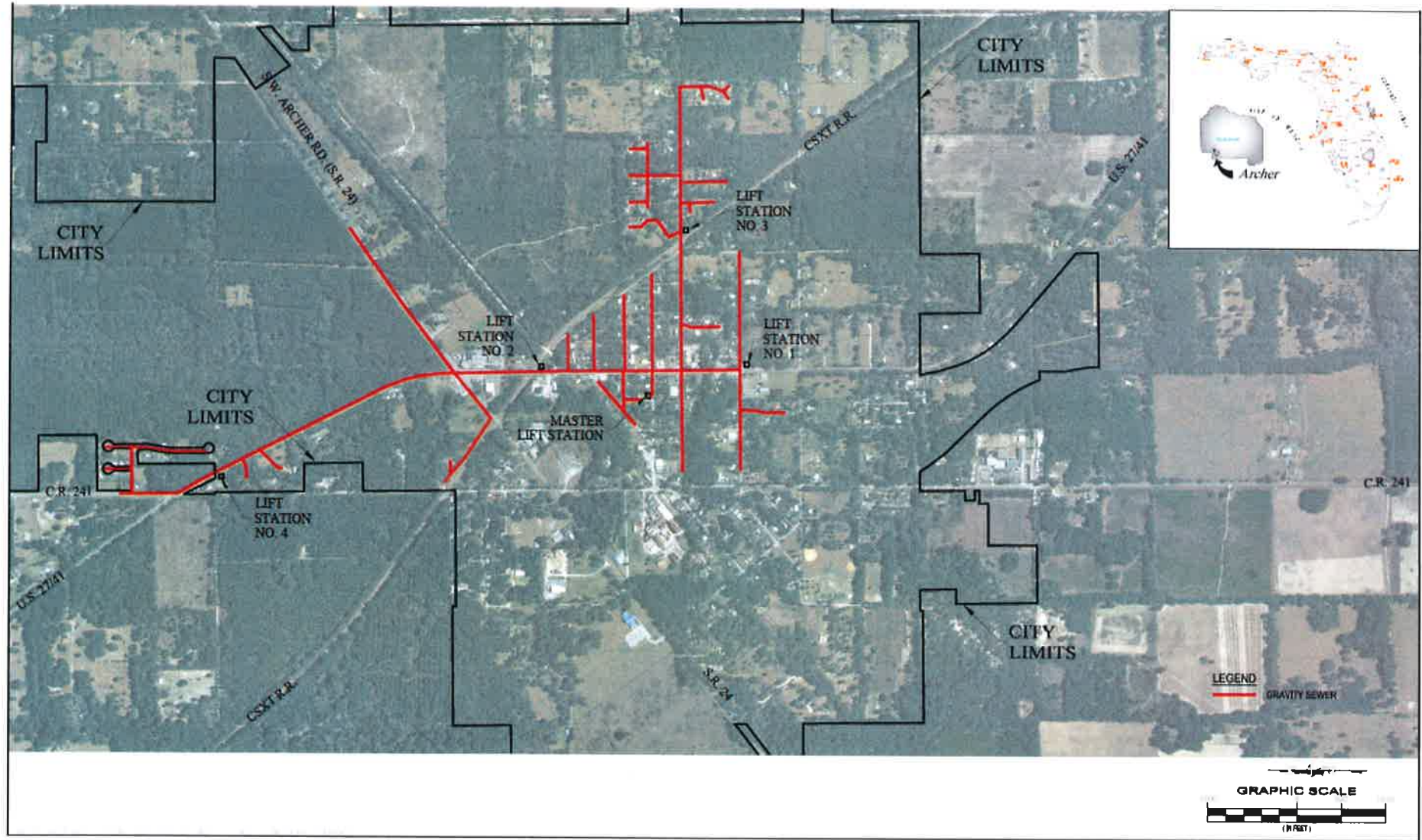
Project Costs

Table 6.1

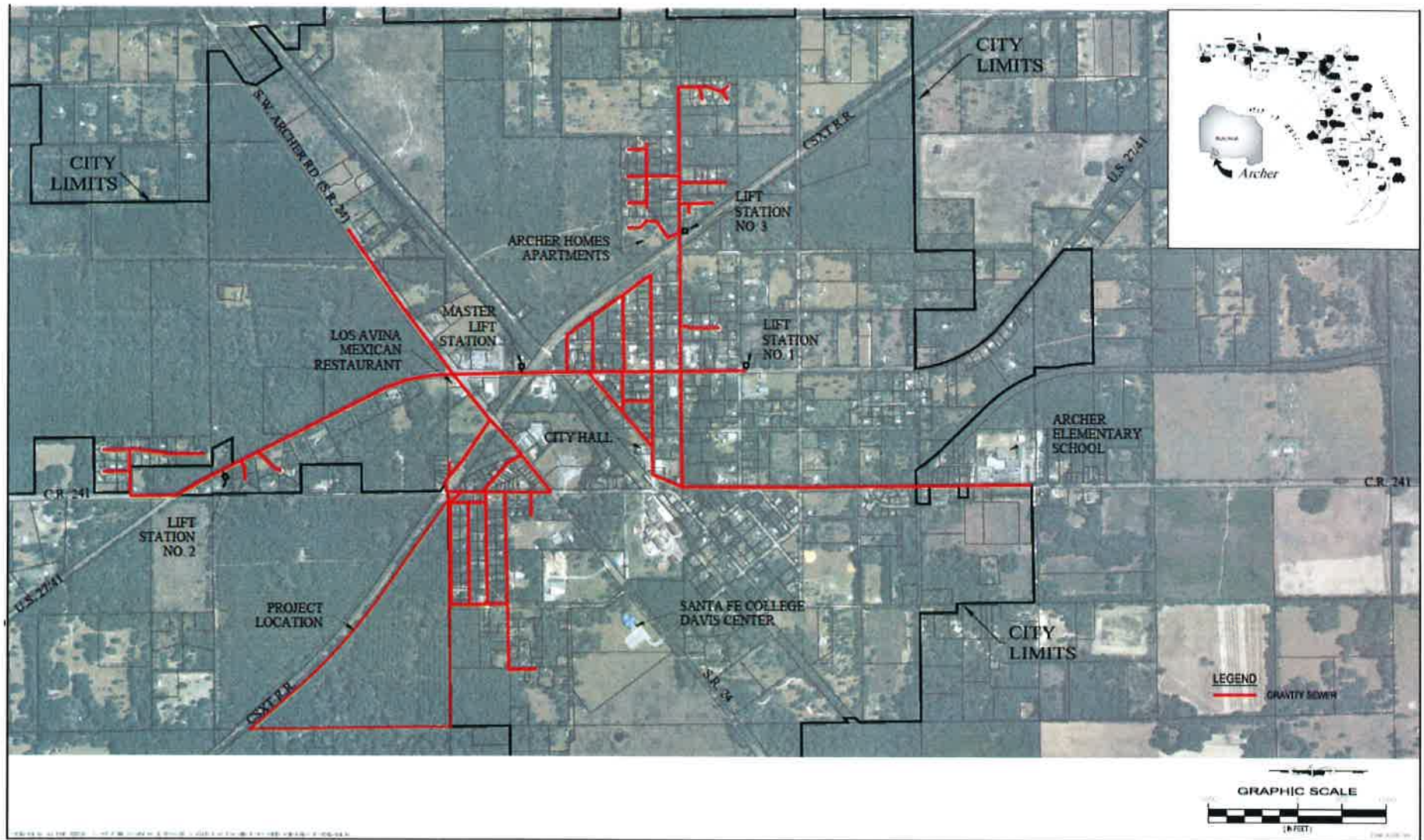
Comparison Of Wastewater Treatment Plant Alternatives

Expense	Present Worth of Construction Costs	Present Worth O&M Costs	Present Worth Cost of Treatment	Present Worth Total Cost
Helping Site– Construct Wastewater Treatment Plant in City of Archer	\$3,603,605	\$1,789,115	N/A	\$5,392,721
Equigen Site– Construct Wastewater Treatment Plant in City of Archer	\$3,677,307	\$1,802,216	N/A	\$5,479,523

Equigen Collection System



Helping Collection System



Project Costs

Table 6.2

Comparison Of Collection System Alternatives

Expense	Present Worth of Construction Costs	Present Worth O&M Costs	Present Worth Total Cost	Cost Per Customer
Helping Site – Medium Area Gravity Collection System	\$4,158,305	\$921,903	\$5,080,207	\$16,601.98
Equigen Site – Medium Area Gravity Collection System	\$3,857,942	\$828,592.80	\$4,686,534	\$18,025.13

Equigen Site Rates

Table 7.3c

Proposed Annual Revenues from the City of Archer Wastewater Distribution System

Wastewater Distribution System Operating Revenues

Customer Type	Wastewater Rate Structure		Number of Customers	Average Monthly Wastewater Usage Per Customer	Average Customer Monthly Bill	Monthly Revenue Generated
	Minimum Bill	\$ PER 1,000 gal				
Residential	\$40.00 first 4,000 gallons	\$10.00	260	5,000	\$50.00	\$13,000.00
Commercial I	\$45.00 first 4,000 gallons	\$28.00	24	6,776	\$122.73	\$2,945.47
Commercial II	\$55.00 first 9,000 gallons	\$30.00	11	22,154	\$449.62	\$4,945.82
Total Monthly Wastewater Operating Revenue =						\$20,891.29
TOTAL ANNUAL REVENUES (100% CONNECTIVITY):						\$250,695.50

Rate Comparison

Equigen		
Customer Type	Average Customer Monthly Bill	Monthly Revenue Generated
Residential	\$50.00	\$13,000.00
Commercial I	\$122.73	\$2,945.47
Commercial II	\$449.62	\$4,945.82
Total Monthly Revenue =		\$20,891.29
TOTAL ANNUAL REVENUES		\$250,695.50

Helping		
Customer Type	Average Customer Monthly Bill	Monthly Revenue Generated
Residential	\$32.37	\$7,930.90
Churches	\$94.95	\$854.55
City Accounts	\$151.06	\$1,057.42
Commercial I	\$209.10	\$7,109.40
Commercial II	\$368.20	\$4,050.20
Total Monthly Revenue =		\$21,002.47
TOTAL ANNUAL REVENUES		\$252,029.58